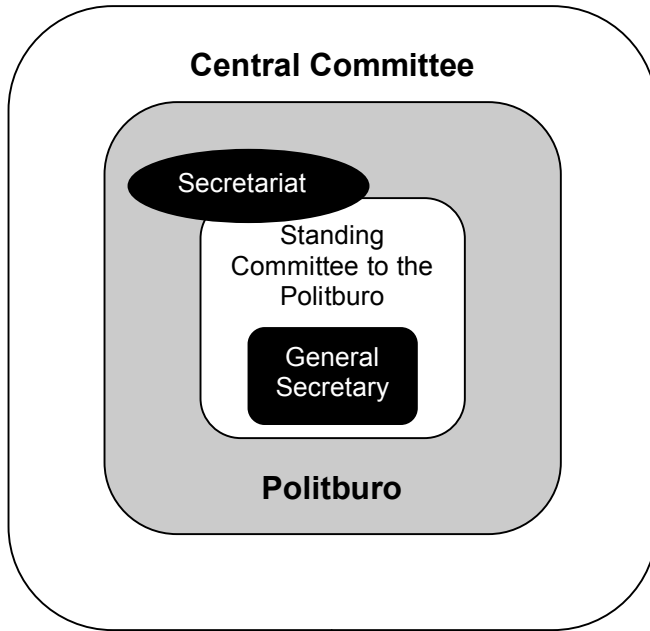
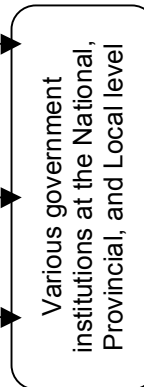
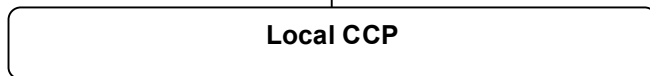
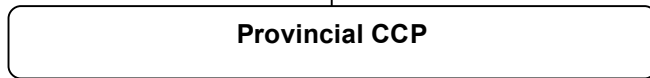
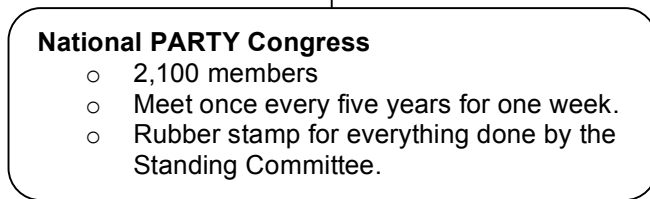


# THE PARTY



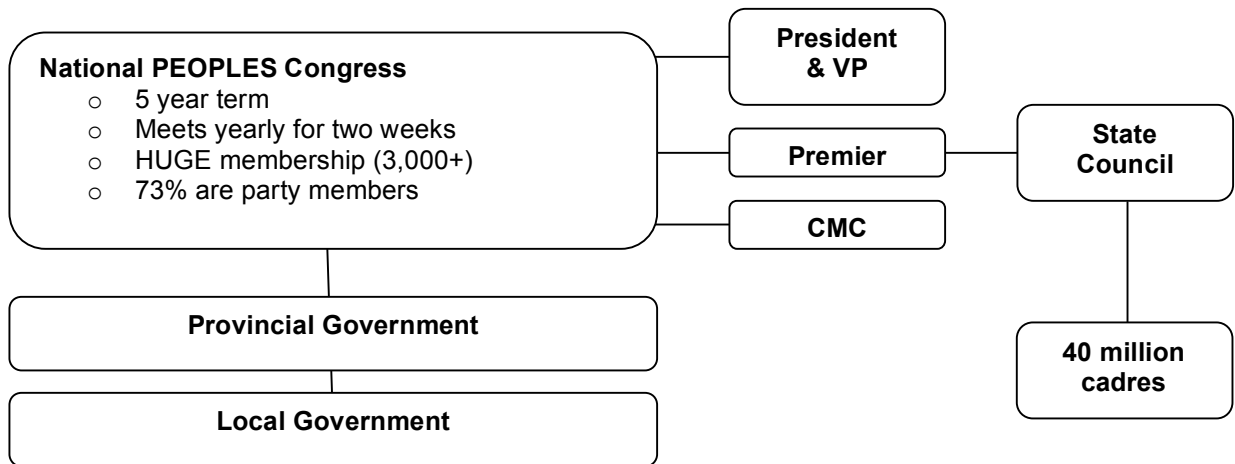
The closer to the center, the fewer members in the group and the more power it wields.



**Dual Rule:**  
Party > Government.  
At each level the party can supervise the actions of the government.

The local government officials are under the supervision of the provincial government AND the local CCP

# THE GOVERNMENT



**Hu Jintao is currently the General Secretary, The President of the PRC, and Chair of the CMC.**

**He also appoints the Premier (PM) –currently Wen Jiabao**

**All the voters in a rural county would vote for the deputies to serve in the county-level people’s congress. Higher-level bodies are elected by lower-level bodies (indirect elections).**

**If it was АМЕРИКА, I would be able to vote for my city councilor.**

**My city councilor would have a voice in picking my county government who would in turn pick my state representatives who would in turn pick my national representatives. I wouldn’t have a voice at all in the party because I would not likely be a member.**